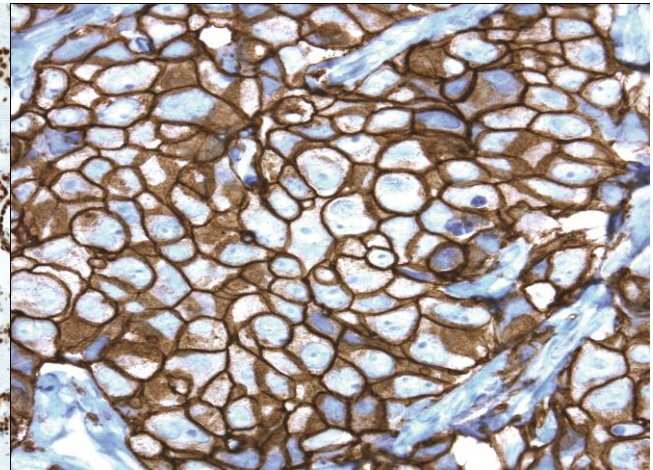
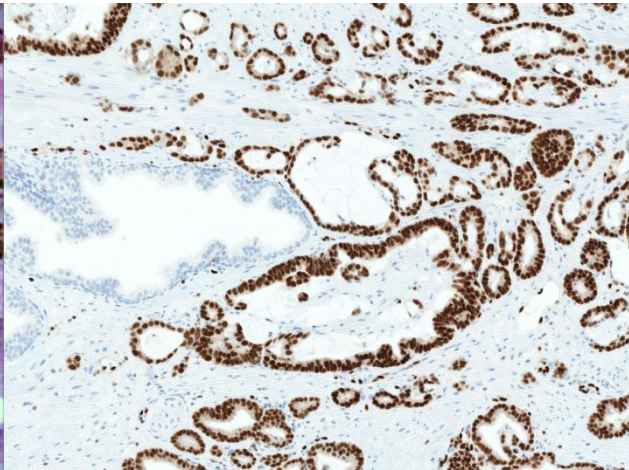
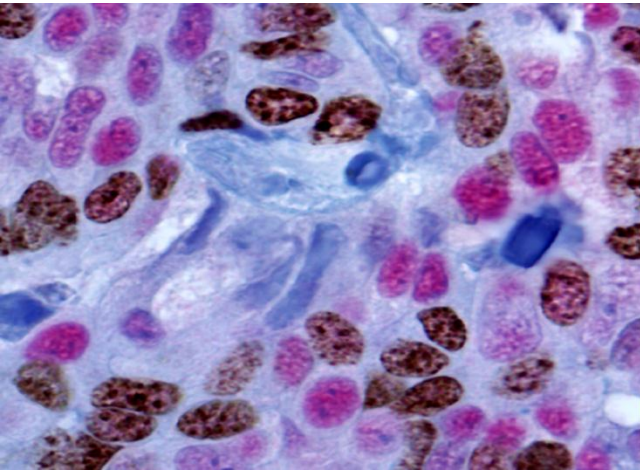


Roche Tissue Diagnostics

The practical use of automated algorithms and Telepathology

Dra. Mary Padilla – Pathologist EMEA/LATAM Tissue Diagnostics
With collaboration of Dr. Lloreta for Telepathology

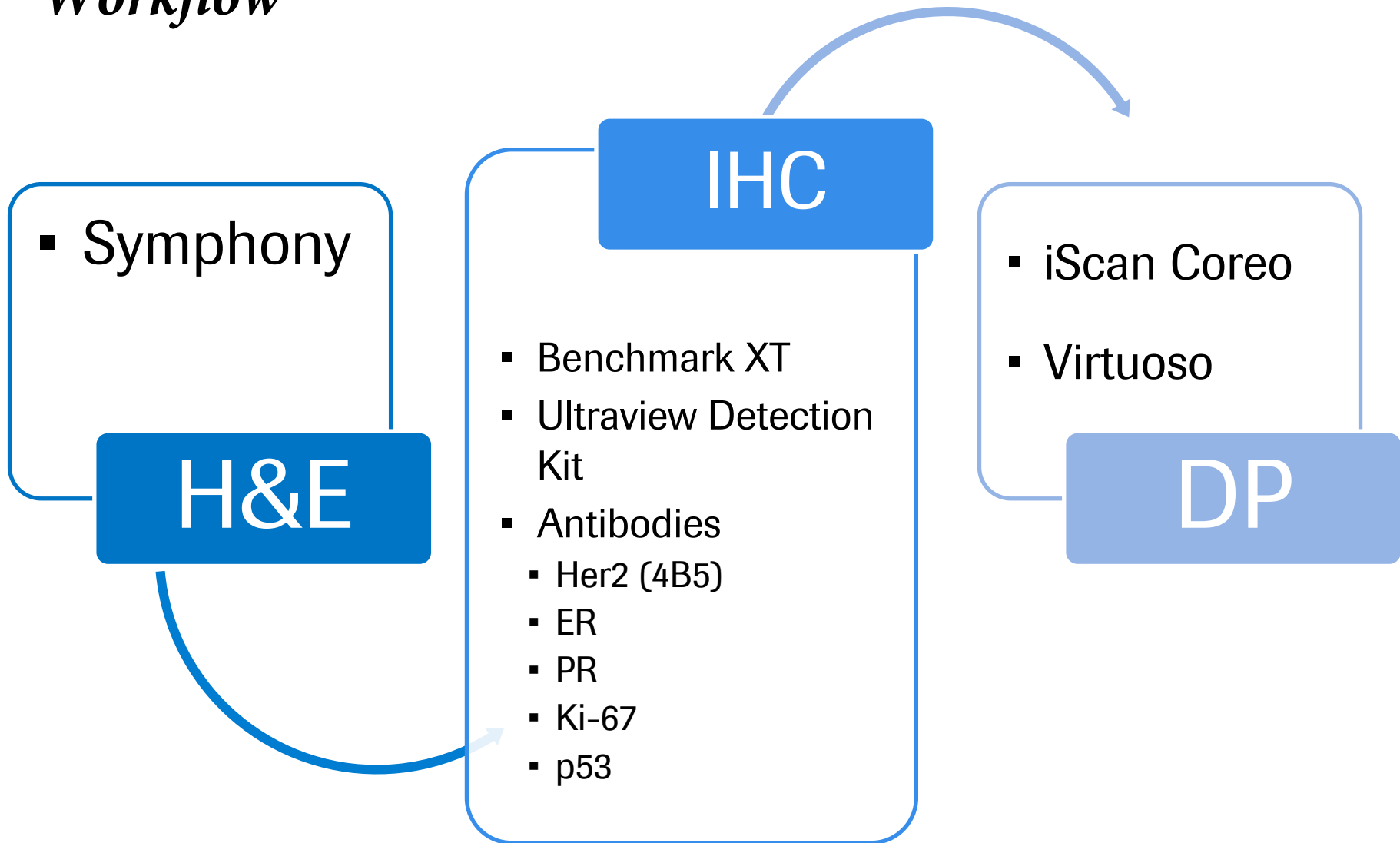


Introduction

Breast Case

Prostate Case

Breast Case *Workflow*



Prostate Case *Workflow*

- Symphony

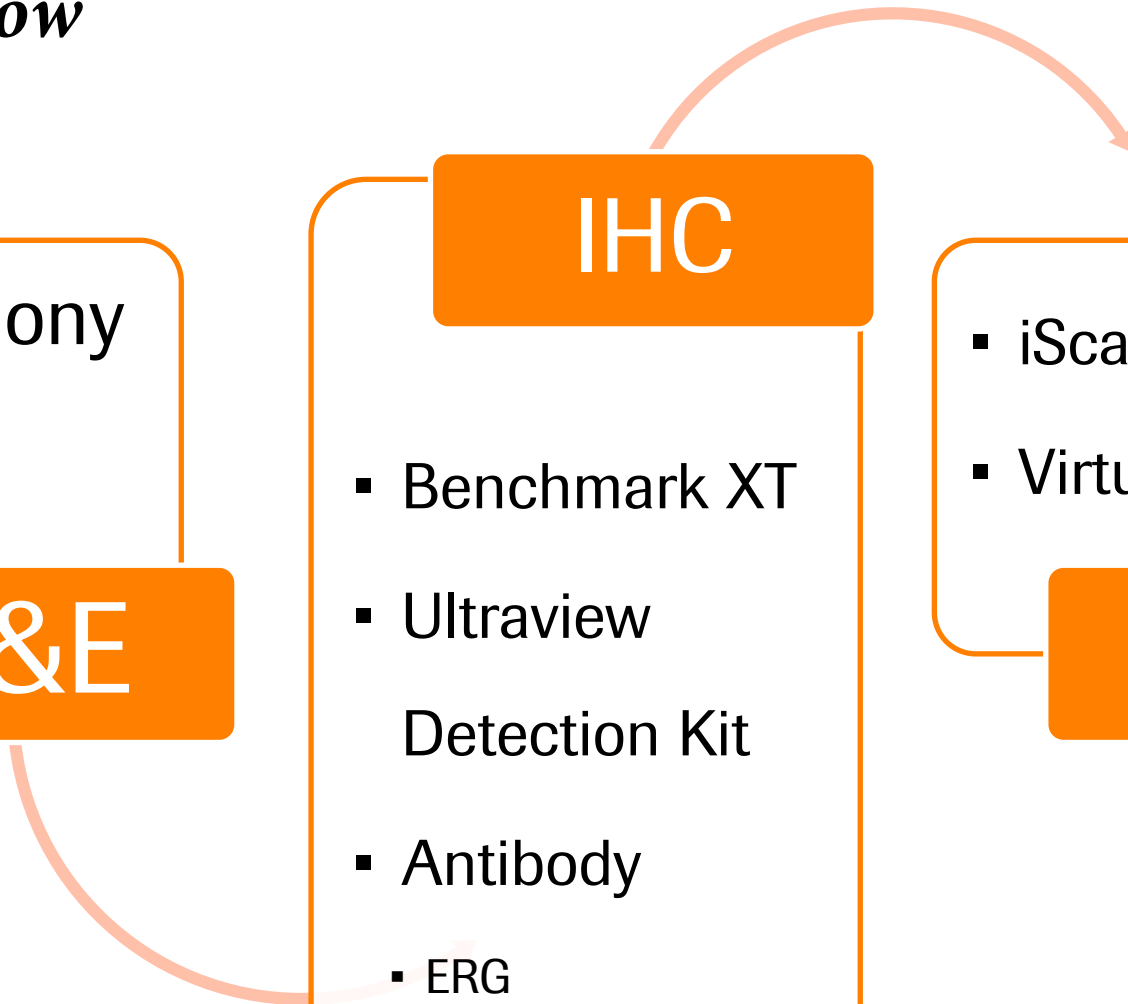
H&E

IHC

- Benchmark XT
- Ultraview
Detection Kit
- Antibody
- ERG

- iScan Coreo
- Virtuoso

DP



ERG antibody

- ERG ab EPR3864 is specific for ERG genomic fusions in prostate cancer
- Clone ERP3864 is the first and only antibody to be validated against ERG gene rearrangements measured by FISH and is also highly concordant with ERG mRNA expression measured by PCR in primary prostate cancer. *Park et al. Neoplasia 12, 7, 2010 pp. 590–598, Van Leenders et al. Modern Pathology (2011), 1–11*
- ERG is specific for prostate cancer and is not seen in any other tested tumor type
- Approximately 50% of prostate cancers are ERG rearranged
- “It is likely that ERG immunohistochemistry, along with basal cell markers and AMACR, will be used in concert with H&E morphology to further enhance our ability to diagnose limited prostate cancer on needle biopsy.”
 - Jonathan Epstein, Histopathology 2012

Thanks to Hospital del Mar for its participation in the preparation of this demonstration providing relevant slides.



Innovación para la salud